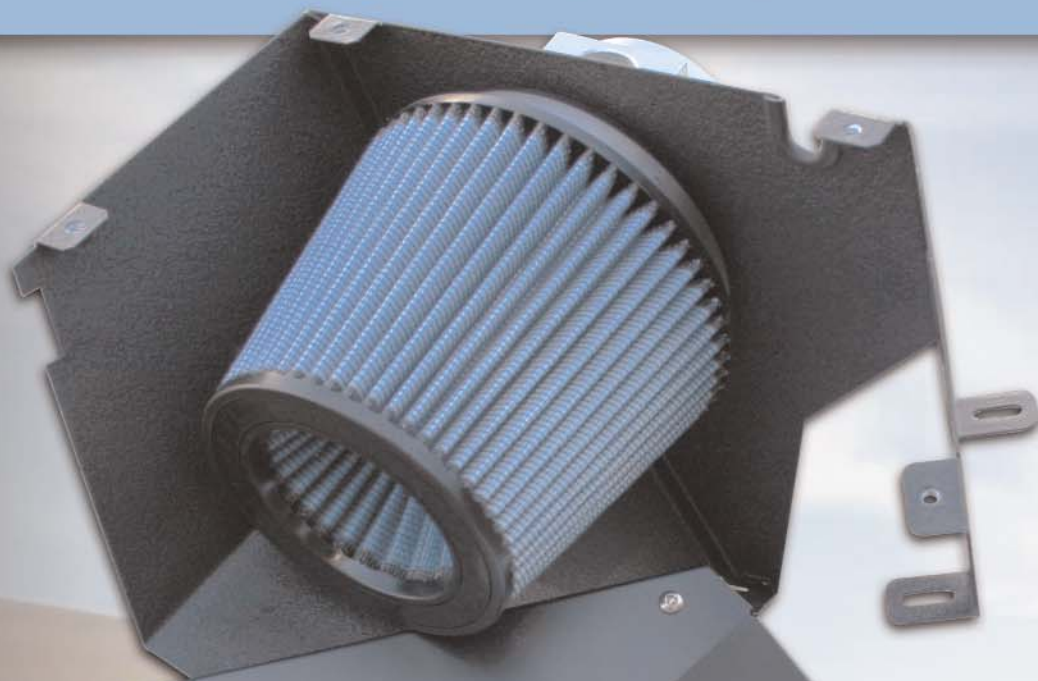




**BMW**  
**E86 Z4 M COUPE**  
**E85 Z4 M ROADSTER**  
**2006-2008 L6-3.2L**

**P/N**  
**51-11521**  
**54-11521**

# **AIR INTAKE SYSTEM**



## **Features:**

- **High performance**
- **Large 5-1/2" filter**
- **Pro Dry 5™ & Pro-5R™**
- **Fine tuned 3-angle billet adaptor**

## **Benefits:**

- **+ 90% flow increase**
- **+ 10 lbs x ft torque**
- **+ 11 H.P.**

[aFepower.com](http://aFepower.com)



# Tech Sheet



## Air Intake Systems

Airflow and volumetric efficiency means huge high-flow, conical air filters are the first step to increase airflow to the engine. Steel heat shields or molded plastic air boxes keep hot air out and fresh, cold air flowing to the filter. Velocity stacks and precision designed intake tubes provide smooth, uninterrupted airflow to the turbo or throttle body.

**New for the BMW '06-'08 E86 Z4 M Coupe / E85 Z4 M Roadster L6-3.2L**

• 11 hp gain @ 4900 rpm  
 • 10 lbs. x ft. gain @ 4900 rpm  
 • 90% cfm increase



Installed

P/N 51-11521  
 54-11521



### Application

**Make** BMW

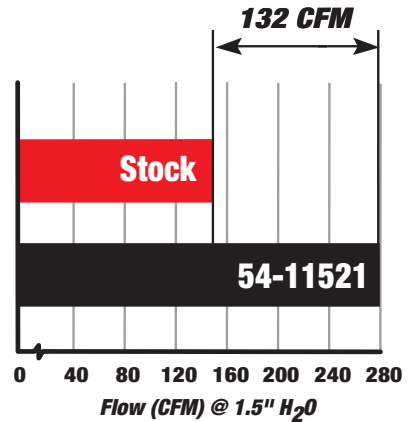
**Model** E86 Z4 M Coupe &  
 E85 Z4 M Roadster

**Year** 2006-2008

**Engine** L6-3.2L

### Performance Data

**CFM** 90% cfm Increase



### Components & Accessories



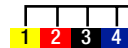
(Billet adaptor)



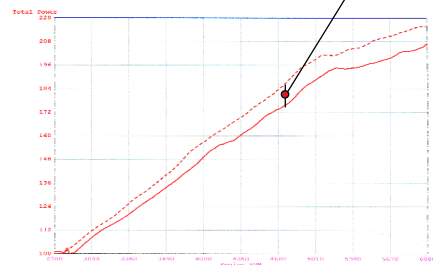
**Restore Kits**  
 90-50001 Blue Aerosol  
 90-50501 Blue Squeeze



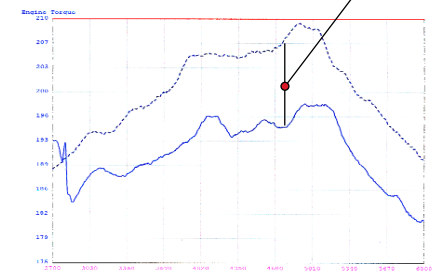
**Pre-filter 28-1009x**



### 11 hp max gain



### 10 lbs. x ft. max gain



### Product data

	<b>PRO DRU 5™</b>	<b>5R™</b>
<b>P/N</b>	51-11521	54-11521
<b>Air filter</b>	21-90044	24-91021
<b>UPC</b>	80295951171	80295950274
<b>Weight</b>	10 lbs.	10 lbs.
<b>Box Size</b>	17" x 12.5" x 12.5"	17" x 12.5" x 12.5"
<b>MSRP</b>	<b>\$570.59</b>	<b>\$582.35</b>
<b>J-Price</b>	<b>\$485.00</b>	<b>\$495.00</b>

advanced FLOW engineering

252 Granite St. Corona, CA 92879 • TEL: 951.493.7100 • FAX: 951.493.7177 • aFepower.com

40-12314

Last update: 6-2008